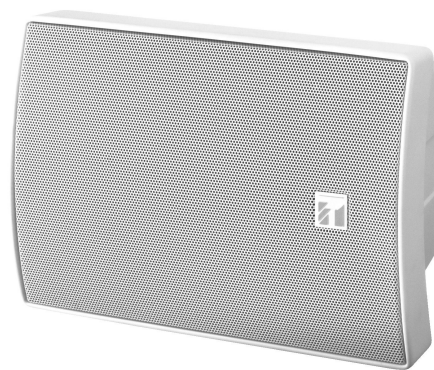


BS-1030W

COMPACT SPEAKER (WHT)

The BS-1030W is a small, 2-way bass-reflex type speaker featuring a wide frequency range suitable for use for announcements and music playback. The BS-1030W can be used for both high-impedance and low-impedance applications. The speaker's splash-proof construction permits it to be installed under the eaves where the speaker is not directly exposed to rain.



Order no: BS-1030W

Specifications

Frequency response	80 Hz - 20 kHz
Connection	2-core cabtyre cable (6 mm diameter)
Sensitivity (1#V, 1#m) (combined)	90 dB
Speaker component	12 cm dynamic cone-type speaker, 2.5 cm balanced dome tweeter
Rated input	30 W
Tappings	30 / 20 / 15 / 10 / 5 W (100 V), 7.5 / 5 / 2.5 W (70 V)
Rated impedance	8 Ω, 100 V, 70 V
Dimensions (W x H x D)	196 x 290 x 150 mm
Dimensions (ø x D)	x 150 mm
Finish	ABS resin, paint, off-white (RAL 9010 or equivalent)
Operating temperature	-10°C to +50°C

BS-1030W

COMPACT SPEAKER (WHT)

Appearance

