

The BS-1110W Speaker is specifically designed to reproduce clear announcements. The speaker also features a wide horizontal directivity owing to the vertical arrangement of speaker units, distributing announcements to a wider area.

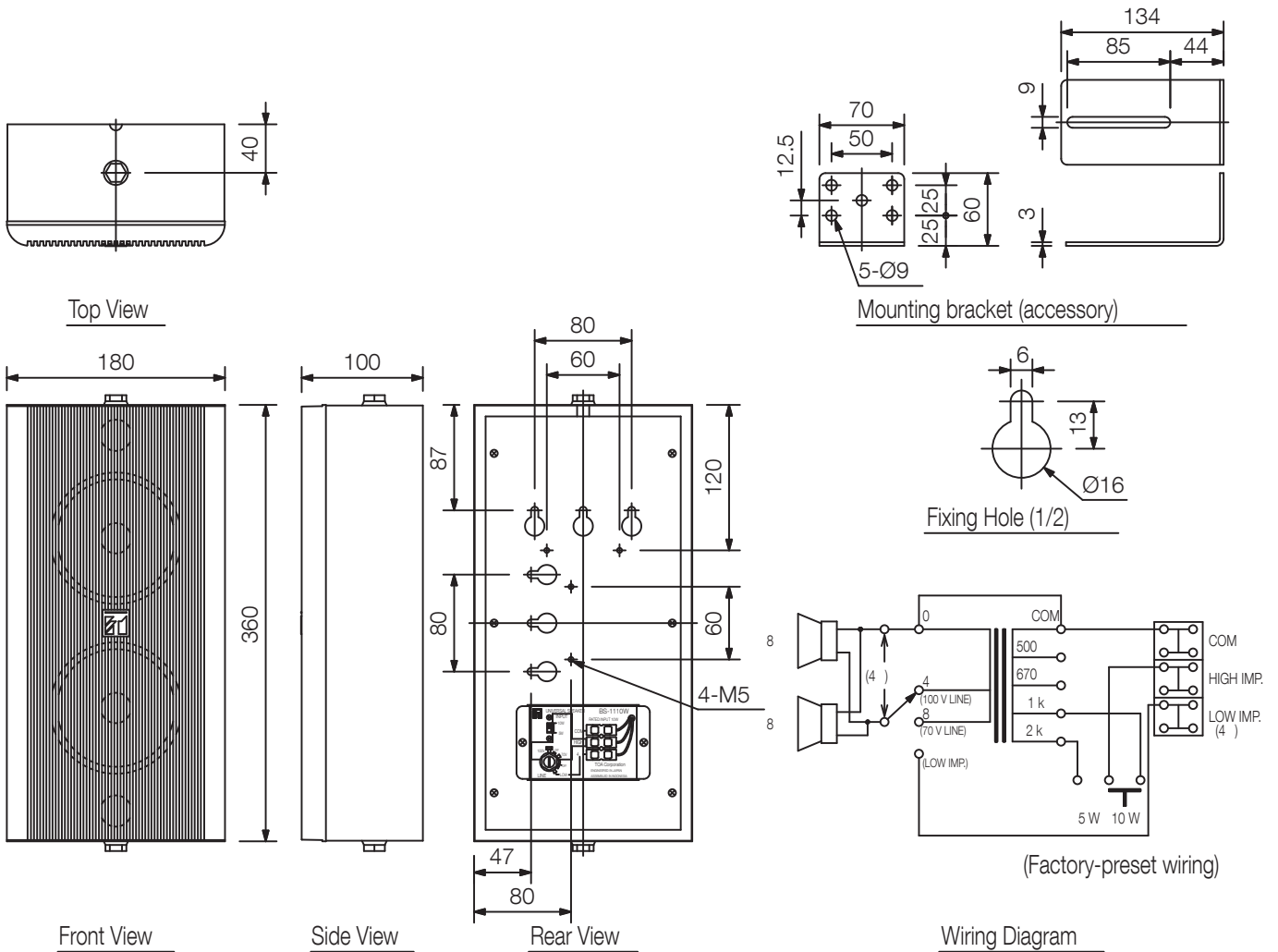


Order no: BS-1110W EU  
Alternative products: TZ-105, TZ-205

## Specifications

Frequency response	150 Hz - 14 kHz
Connection	Push-in connector (bridging connections possible)
Sensitivity (1#V, 1#m) (combined)	92 dB
Speaker component	12 cm cone-type x 2
Rated input	10 W
Tappings	100V line: 1k $\Omega$ (10W), 2k $\Omega$ (5W) 70V line: 500 $\Omega$ (10W), 1k $\Omega$ (5W) 4 $\Omega$ (10W)
Rated impedance	100 V, 70 V, 4 $\Omega$
Dimensions (W x H x D)	180 x 360 x 100 mm
Dimensions ( $\phi$ x D)	x 100 mm
Finish	Plywood, ABS resin, vinyl coating, off-white (RAL 9010 or equivalent)
Operating temperature	-10°C to +50°C

Appearance



UNIT:mm SCALE:1/6